



COMPLEMENTARY CASUAL PRODUCTS - ACCENTS

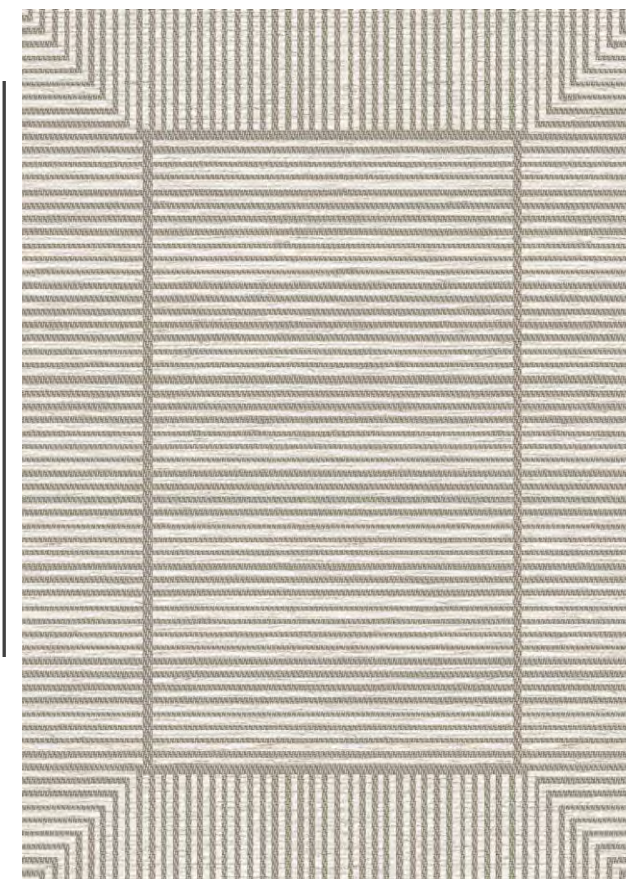
2023 DESIGN EXCELLENCE AWARDS

BERLIN GARDENS

Complementary
Casual Products
- Accents



Finley Rug



Finley Rug

Product Description: The Finley Rug holds the exclusive Microban license for North America, providing 99.9% effective antibacterial protection. Its durable construction features a polypropylene surface, latex backing and UV-treated woven material. Resistant to fading and water for various environments. Easy to clean with a hose or power washer. Made in Canada.

Operational/Functional Aspects:

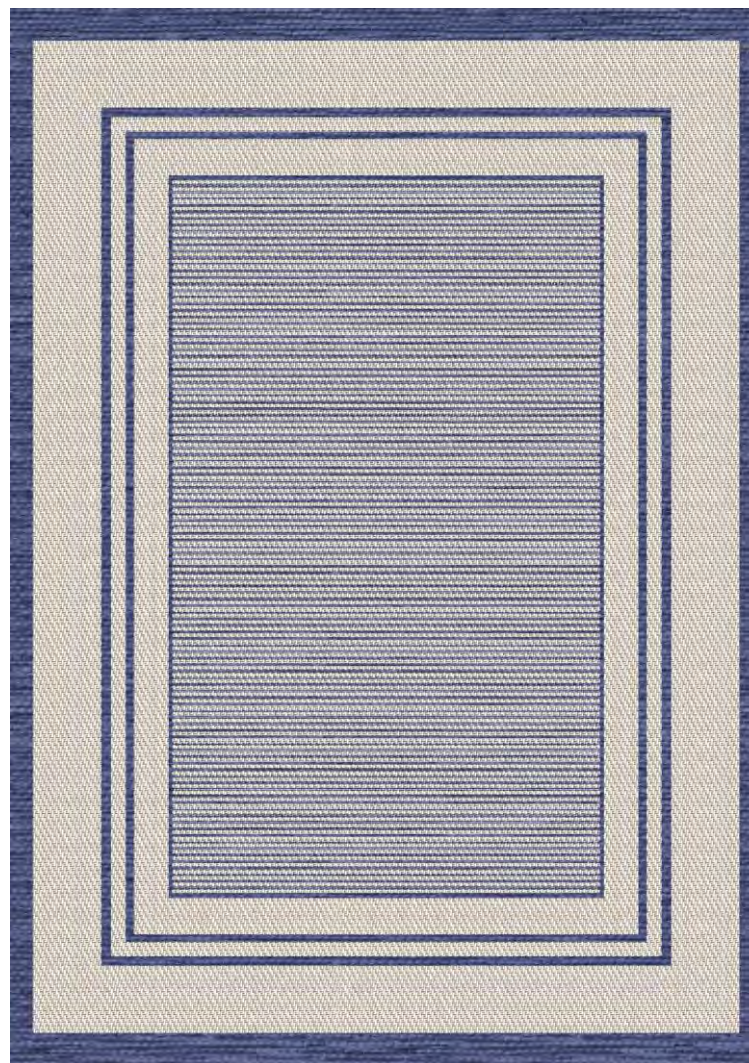
Colors of Finishes Available:

Product
Dimensions:
Width: 5'
Height: 8'

Weight: 10 lbs.

BERLIN GARDENS

Complementary
Casual Products
- Accents



Hampton
Rug

Hampton Rug

Product Description: The Hampton Rug holds the exclusive Microban license for North America, providing 99.9% effective antibacterial protection. Its durable construction features polypropylene surface, latex backing, and UV-treated woven material. Resistant to fading and water, for various environments. Easy to clean with a hose or power washer. Made in Canada.

Operational/Functional Aspects:

Colors of Finishes Available:

Product Dimensions:
8' x 11'

Weight: 20 lbs.

ELAINE SMITH INC.

Complementary
Casual Products
- Accents



FRONT



BACK

Unconditional Woof Pillow

Product Description: THE HUMAN – DOG BOND IS A DEEP CONNECTION PROVIDING US WITH LOVE, HAPPINESS AND SUPPORT.

This exclusive Elaine Smith pillow design pays tribute to man's best friend using the softest and most durable performance fabrics. The multi-layered, reversible pillow combines luxurious plush charcoal terry loop fabric, on top of a woven linen texture and pearlized ground. “Unconditional Woof” depicts the head and shoulders of the dog on the front side of the pillow and the body and tail of the dog on the back of the pillow, adding a touch of humor to the design to bring a smile and moment of joy to the owner. Each part of the design is meticulously hand-stitched in our West Palm Beach, Florida factory, creating a textural work of art.

Operational/Functional Aspects: ELAINE SMITH® performance fabrics redefine durability, providing resistance to fading, water, stains, mold and mildew to stand up to any setting with the luxurious softness and style of indoor pillows. The lovely hand of the fabric and detailing stands apart from any other maker of indoor/outdoor pillows. Every ELAINE SMITH® pillow is hand-tailored by our team of dedicated artisans, who also create by hand our embellishments including macrame, braided roping and fringes. Our performance fabric is woven of 100% solution-dyed fibers, saturated with UV-stabilized pigments for colors that stay true over time. The pillows also feature a concealed zipper to remove the insert, and the easy-to-clean fabric is machine washable and bleach safe for worry-free livability.

Colors of Finishes Available:

Unconditional Woof Pillow

Designer:
Elaine Smith

Product Dimensions:
20" x 20"

Weight: 2 lbs.

ELAINE SMITH INC.

Complementary
Casual Products
- Accents



Botanica Lily
Pillow

Product Description:

LILIES REPRESENT FEMININITY AND A REJUVENATION OF THE SOUL.

Elaine Smith takes pride in creating pillows of the highest caliber. This design, Botanica Lily, carries our **brand's** commitment to luxury in every stitch. Hand-sewn with exquisite detail, the colors and textures of Dew and Indigo performance fabrics are layered to deliver a glorious, impactful design.

Operational/Functional Aspects: ELAINE SMITH® performance fabrics redefine durability, providing resistance to fading, water, stains, mold and mildew to stand up to any setting with the luxurious softness and style of indoor pillows. The lovely hand of the fabric and detailing stands apart from any other maker of indoor/outdoor pillows. Every ELAINE SMITH® pillow is hand-tailored by our team of dedicated artisans, who also create by hand our embellishments including macrame, braided roping and fringes. Our performance fabric is woven of 100% solution-dyed fibers, saturated with UV-stabilized pigments for colors that stay true over time. The pillows also feature a concealed zipper to remove the insert, and the easy-to-clean fabric is machine washable and bleach safe for worry-free livability.

Colors of Finishes Available:

Botanica Lily Pillow

Designer:
Elaine Smith

Product Dimensions:
22" x 22"

Weight: 2 lbs.

MAMAGREEN

Complementary
Casual Products
- Accents



ARO Divider
Model B-Rope
Weave

ARO Divider Model B-Rope Weave

Product Description: ARO divider is the reimagination of traditional dividers, giving privacy and intimate moments to outdoor and indoor life. ARO is made from a high-quality powder-coated paint for its frame and powder-coated galvanized steel for its base to give strong support as well as to withstand wind. Comes with a weaving and roping style that brings an edgy look to the space.

Operational/Functional Aspects: The ARO Dividers is suitable for hospitality use both indoors and outdoors.

Colors of Finishes Available:

Frame Aluminum: White F03 color, Weaving Rope: Pearl W32 color

Frame Aluminum: Black F05 color, Weaving Rope: Raven W33 color

Product Dimensions:

Diameter: 18"

Height: 83"

Width: 51.5"

Weight: 86 lbs.

MAMAGREEN

Complementary
Casual Products
- Accents



ARO Divider
Model A-Sling

Product Description: ARO divider is the reimagination of traditional dividers, giving privacy and intimate moments to outdoor and indoor life. ARO is made from a high-quality powder-coated paint for its frame and powder-coated galvanized steel for its base to give strong support as well as to withstand wind. Comes with a weaving and roping style that brings an edgy look to the space.

Operational/Functional Aspects: The ARO Dividers is suitable for hospitality use both indoors and outdoors.

Colors of Finishes Available:
N/A

ARO Divider Model-A Sling

Product Dimensions:

Diameter: 18"

Height: 83"

Width: 51.5"

Weight: 86 lbs.

TRANS-OCEAN IMPORTS

Complementary
Casual Products
- Accents



Marina Secret
Garden

Product Description: Indoor/outdoor pillow, power-loomed in Turkey using 75% polypropylene/25% polyester yarn.

Operational/Functional Aspects: Indoor/outdoor pillow. Yarns are UV stabilized to reduce fading and mildew resistant with zipper enclosures to remove polyester stuffer. Cover is machine washable.

Colors of Finishes Available:
Available in black and ivory

Marina Secret Garden

Designer:
Liora Manne

Product Dimensions:
18" x 18" square
12" x 18" rectangle

Weight: 2.1 lbs.

TRANS-OCEAN IMPORTS

Complementary
Casual Products
- Accents



Monterey
Diamond
Border Natural

Product Description: Outdoor rug, power-loomed in Turkey using 91% polypropylene/ 9% polyester yarn

Operational/Functional Aspects: Yarns are UV stabilized to reduce fading and mildew resistant, indoor/outdoor and able to handle direct exposure to the elements. Rug dries quickly and is easily cleaned by hosing off with water.

Colors of Finishes Available:
Natural

Monterey Diamond Border Natural

Designer:
Liora Manne

Product Dimensions:
5'3" x 7'3"
7'10" x 9'10"
(available in 6 sizes)

Weight: 11 lbs.



TUUCI

Complementary
Casual Products
- Accents



Garden Planters Collection – Highland Planters



Product Description: The Tuuci Garden Planters collection provides versatile space delineation while adding a visually appealing botanical element that can complement the existing setting or enhance a new build project. The Highland Planter is reminiscent of the mixed materials from sailing yachts and **today's** luxurious furniture designs. A refined version of timelessness, it features brilliant polished ridges peaking between arched channels and smooth panels finished in fourteen choices of either rich Aluma-TEAK wood tones or neutral powder-coat hues. The Highland Planter is offered in eight different sizes and can be enhanced with optional features including: integrated trellis and espalier screen designs, casters and light posts for ambient lighting (lights not included).

Operational/Functional Aspects: The Tuuci Garden Planter Collection will live comfortably in a modern or traditional environment and easily cross from hospitality and commercial projects to residential environments. The Highland Planters are available in multiple sizes, shapes and screen options that can be paired to create varying degrees of privacy as well as adjustable spaces. The addition of casters gives increased flexibility for quick adjustments to flex space to create more expansive location for larger groups or smaller, more intimate clusters for a more personal experience. The blend of form and function speaks to the core elements of a Tuuci product that must deliver a sense of intentional design with high performance. The construction stems from our marine roots and with a generous five-year warranty, all components are designed to endure fierce coastal environments.

Colors of Finishes Available:

Powder Coats: Silver Sand, Glacier White, Sandbar, Oyster, Night Fog, Espresso, Graphite, Black
Sea Plantation Aluma-Teak: Aspen White, Cypress, Driftwood, Weathered, Natural, Java

Garden Planters Collection/Highland Planters

Designer:
Dougan Clarke

Product Dimensions:

Single Height:

18"Hx18"Wx14"D

18"Hx36"Wx14"D

18"Hx36"Wx36"D

18"Hx72"Wx14"D

Tall Height:

30"Hx18"Wx14"D

30"Hx36"Wx14"D

30"Hx72"Wx14"D

30"Hx36"Wx36"D

Weight: 19 - 63 lbs.

TUUCI

Complementary
Casual Products
- Accents

Garden Planters Collection – Mainland Planters



Garden Planters Collection/Mainland Planters

Designer:
Dougan Clarke

Product Dimensions:

Single Height:

18"Hx18"Wx14"D

18"Hx36"Wx14"D

18"Hx36"Wx36"D

Tall Planter:

30"Hx18"Wx14"D

30"Hx36"Wx14"D

30"Hx36"Wx36"D

Weight: 17 - 51 lbs.

Product Description: The Tuuci Garden Planters collection provides versatile space delineation while adding a visually appealing botanical element that can compliment the existing setting or enhance a new build project. The Mainland is simple and its monochromatic design nods to contemporary design roots. Available in eight powder-coat finishes, it can be comfortably situated as a complementary architectural feature in a classic setting. The Mainland Planter is offered in six different sizes and can be enhanced with optional features including integrated trellis and espalier screen designs, casters and light posts for ambient lighting (lights not included).

Operational/Functional Aspects: The Tuuci Garden Planter Collection will live comfortably in a modern or traditional environment and easily cross from hospitality and commercial projects to residential environments. The Mainland Planters are available in multiple sizes, shapes and screen options that can be paired to create varying degrees of privacy as well as adjustable spaces. The addition of casters gives increased flexibility for quick adjustments to flex space to create more expansive location for larger groups or smaller, more intimate clusters for a more personal experience. The blend of form and function speaks to the core elements of a Tuuci product that must deliver a sense of intentional design with high performance. The construction stems from our marine roots and with a generous five-year warranty, all components are designed to endure fierce coastal environments.

Colors of Finishes Available:

Powder Coats: Silver Sand, Glacier White, Sandbar, Oyster, Night Fog, Espresso, Graphite, Black Sea

WEST OF THE WIND

Complementary
Casual Products
- Accents



All In A Row

All In A Row

Product Description: Polyester canvas coated with proprietary lacquer to withstand outdoor exposure. Poly-vinyl stretcher bars. Will not warp or decay in outdoor environment. Hanging system that has been tested in 60 mph winds.

Operational/Functional Aspects: This All Weather All Season Outdoor Canvas Art can be placed in any outdoor location with direct exposure to the elements. Licensing with professional artists and photographers, these giclee prints add a new design dimension to any outdoor living space. Unique in design as well as durability, the prints incorporate all the necessary factors to protect against UV fading and are completely waterproof.

Colors of Finishes Available: N/A

Product Dimensions:

Width: 48"

Height: 24"

Depth: 1.5"

Weight: 6 lbs.

WEST OF THE WIND

Complementary
Casual Products
- Accents



Revival

Revival

Product Description: Polyester canvas coated with proprietary lacquer to withstand outdoor exposure. Poly-vinyl stretcher bars. Will not warp or decay in outdoor environment. Hanging system that has been tested in 60 mph winds.

Operational/Functional Aspects: This All Weather All Season Outdoor Canvas Art can be placed in any outdoor location with direct exposure to the elements. Licensing with professional artists and photographers, these giclee prints add a new design dimension to any outdoor living space. Unique in design as well as durability, the prints incorporate all the necessary factors to protect against UV fading and are completely waterproof.

Colors of Finishes Available: N/A

Product Dimensions:

Width: 40"

Height: 30"

Depth: 1.5"

Weight: 6 lbs.