

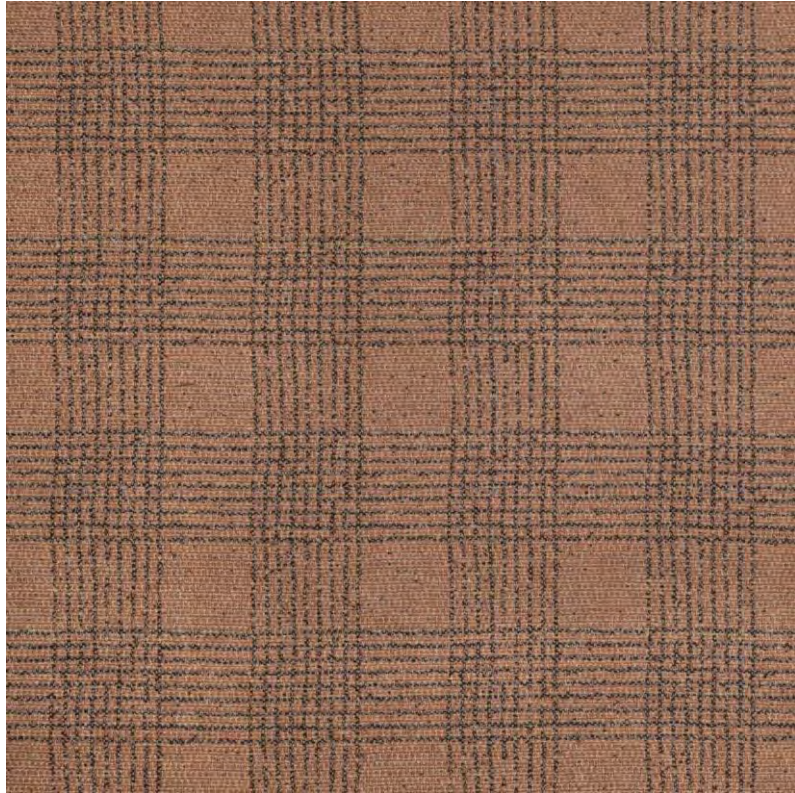


FABRIC

2023 DESIGN EXCELLENCE AWARDS

GLEN RAVEN, INC.

Fabric



Crossings Terra

Product Description: Inspired by grounding, the restorative practice of rebalancing our internal energy through connecting with the earth, **Crossings'** irregularly designed and subtle open plaid pattern interprets the scored lines and patterns of the earth's soil captured from above. Crossings is a visual reminder of the importance of bringing the rhythm and balance of nature to the performance fabric category.

Operational/Functional Aspects: Crossings is created using a melange warp incorporating recycled Sunbrella solution-dyed acrylic yarns which results in yarn flecks and irregularities on the face of the fabric, adding depth, richness and originality to the construction, texture, pattern and hue. These characteristics are a subtle symbol of the inherent beauty found in perfectly imperfect things in nature, hand-woven objects and upcycled goods so important and popular today. The color palette of Crossings ranges from rich earth tones to softer hues to enhance its intriguing and unique appearance presenting a subtle plaid pattern that is all at once distinctive yet easy on the eye. Crossings is part of a larger collection of nearly 40 skus including six coordinating plain and patterned constructions with each design presenting a different interpretation of the energy and natural rhythms present in the ground beneath our feet.

Colors of Finishes Available:

Available in 5 colorways: Terra (shown), Dune, Sky, Carbon, Gravel

Crossings Terra

Designer:
Richard Frinier

Product Dimensions:

Width: 13.5"

Height: 13.04"

54" Roll

Weight: 14.91 oz./sq. yard

GLEN RAVEN, INC.

Fabric

Dream Mist



Dream Mist

Product Description: Versatile and calming, Dream is an ethereal fabric that is perfect for layering. This **pattern's** global inspiration is enhanced through a design that features an organic ikat technique and embroidered stitch effect. Dream Mist is woven with 100% Sunbrella solution-dyed acrylic and is available in 2 colorways.

Operational/Functional Aspects: Engineered to withstand Mother Nature, Sunbrella fabrics are long-lasting and resist the damaging effects of sun, rain, snow and humidity. Stain resistant and easy to clean, Sunbrella fabrics have a proprietary finish that **won't** wash away. Unlike ordinary fabrics with dyes added to the surface, Sunbrella fabrics are made with fibers that are solution-dyed with UV-stabilized pigments – so the color stays brilliant over time, despite extended exposure to sunlight. All Sunbrella fabrics are resistant to mold and mildew. Even after continual use and cleaning, Sunbrella fabrics maintain the same luxurious look and feel.

Colors of Finishes Available:

Pattern Dream is available in 2 colorways, Mist (shown) & Dune

Product Dimensions:

Width: 14"

Height: 5.09" repeat

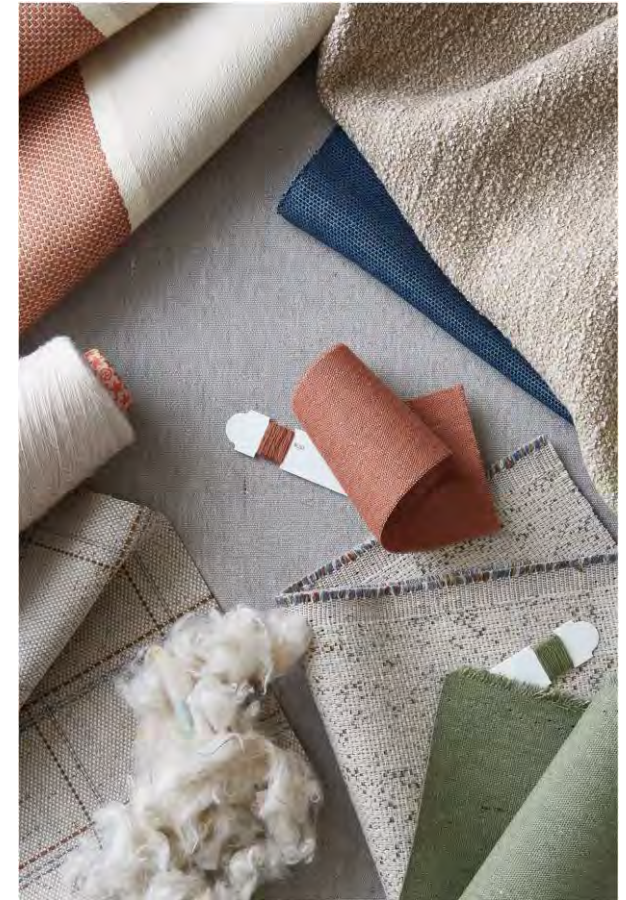
54" Roll

Weight: 10.76 oz./sq. yard

GLEN RAVEN, INC.

Fabric

Improve Dune



Improve Dune

Product Description: Pattern Improve is a luxurious boucle that lends dimension and warmth to any setting. Shown here in a camel colorway, Improve Dune is woven with over 50% Sunbrella recycled polyester yarns mixed with Sunbrella solution-dyed acrylic. Improve is offered in three colorways as part of the Sunbrella stock collection with five additional colorways available to manufacturers.

Operational/Functional Aspects: Engineered to withstand Mother Nature, Sunbrella fabrics are long-lasting and resist the damaging effects of sun, rain, snow, and humidity. Stain resistant and easy to clean, Sunbrella fabrics have a proprietary finish that **won't** wash away. Unlike ordinary fabrics with dyes added to the surface, Sunbrella fabrics are made with fibers that are solution dyed with UV-stabilized pigments – so the color stays brilliant over time, despite extended exposure to sunlight. All Sunbrella fabrics are resistant to mold and mildew. Even after continual use and cleaning, Sunbrella fabrics maintain the same luxurious look and feel.

Colors of Finishes Available:

Pattern Improve is available to the trade in 8 colorways: White (stock), Stucco (stock), Dune (stock), Mink, Indigo, Charcoal, Smoke, & Sterling

Product Dimensions:
54" Roll

Weight: 13.8 oz./sq. yard



GLEN RAVEN, INC.

Fabric

CATEGORY
WINNER



Strada Sky



Product Description: Inspired by grounding, the restorative practice of rebalancing our internal energy through connecting with the earth, **Strada's** intriguing and irregular striated pattern reflects the unique and ever-changing appearance and movement of clouds in the sky to a cross-section of the **earth's** rock sediments bringing the rhythm and balance of nature to the performance fabric category.

Operational/Functional Aspects: Strada incorporates recycled Sunbrella(R) solution-dyed acrylic yarns which results in yarn flecks and irregularities on the face of the fabric, adding depth, richness and originality to the construction, texture, pattern and hue. These characteristics are a subtle symbol of the inherent beauty found in perfectly imperfect things in nature, hand-woven objects and upcycled goods so important and popular today. The color palette of Strada ranges from rich earth tones to softer hues to enhance its intriguing and uniquely striated pattern presenting a chunky bouclé surface texture design. Strada is part of a larger collection of nearly 40 skus including six coordinating plain and patterned constructions with each design presenting a different interpretation of the energy and natural rhythms present in the ground beneath our feet.

Colors of Finishes Available:

Available in 5 colorways: Sky(shown), Pebble, Dune, Quarry and Terra

Strada Sky

Designer:
Richard Frinier

Product Dimensions:

Width: 14"

Height: 41.67" Repeat - 54" Roll

Weight: 18.28 oz./sq. yard

MILLIKEN &
COMPANY

Fabric



Adventure



Adventure

Product Description: The Adventure pattern adds an element of intrigue and sparks curiosity with a layered foliage design. Adventure represents the spirit of the Outer Realm collection of fabrics that encourages exploration between classic and adventurous spirits. Adventure is a jacquard woven design that provides texture in an "up the roll" direction. Available in an array of inviting colors, Adventure is made from 100% solution-dyed acrylic yarns with color engineered to resist fading. This collection is designed to resist the impact of outdoor elements while still maintaining beautiful style and the comfortable feel of an interior textile.

Operational/Functional Aspects: Designed with durability in mind, Adventure fabrics are fade-resistant, bleach cleanable backed by a five-year warranty. All Milliken outdoor fabrics feature a non-PFAS (per- and polyfluoroalkyl substances) performance finish to make fabrics easy to clean and water-resistant. Adventure fabrics would look great on accent upholstery, pillows or umbrellas.

Colors of Finishes Available:
Five colors

Product Dimensions:

Width: 14"

Height: 14.75" Repeat

Weight: 10.8 oz./sq. yard

OUTDURA BY SATTLER

Fabric



Encore

Encore

Designer:
Mariia Elizarova

Product Dimensions:
54" wide

Product Description: Take a bow with this beautifully resilient dobby that can star as the headliner body fabric or in a support role as a stunning accent piece. An applaud to Coast-to-Coast's Encore in today's color combinations that will make any outdoor setting the home's main attraction. Outdura's Encore is 100% premium solution-dyed acrylic and available in 23 colors.

Operational/Functional Aspects: 100% solution-dyed acrylic woven fabric, fade resistant, stain and water resistant, mold and mildew resistant. Easy to clean (bleach cleanable), breathable, high in abrasion resistance. Made in the USA using imported European yarns.

Colors of Finishes Available:

Snow, Moon, Silver, Jute, Ecru, Dune, Putty, Turtle, Dusk, Baltic, Midnight, Mermaid, Scuba, Lagoon, Sky, Glacier, Reef, Mist, Spring, Grass, Blush, Salsa, Sangria

OUTDURA BY SATTLER

Fabric



Fantasy

Product Description: Fantasy, a reverie of underwater shapes that transform the accent jacquard fabric into a conversation piece. Is this a coral shape and this a turtle or could this be a school of fish? An impressionistic design approach that combines multiple colors and shapes making this most resilient fabric a charming addition to the Coast-to-Coast collection. **Outdura's** Fantasy is 100% premium solution-dyed acrylic and is available in 11 colors.

Operational/Functional Aspects: 100% solution-dyed acrylic woven fabric, fade resistant, stain and water resistant, mold and mildew resistant. Easy to clean (bleach cleanable), breathable, high in abrasion resistance. Made in the USA using imported European yarns.

Colors of Finishes Available:

Dove, Dune, Dusk, Driftwood, Baltic, Sailor, Sky, Scuba, Mermaid, Spring, Salsa

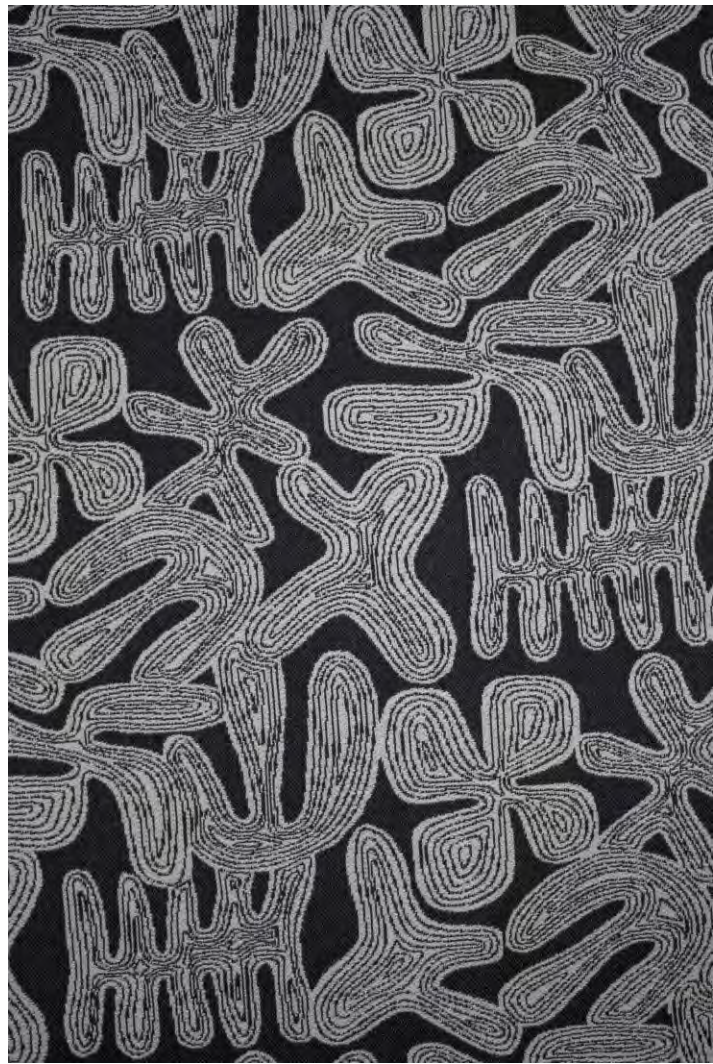
Fantasy

Designer:
Mariia Elizarova

Product Dimensions:
54" wide

STI/REVOLUTION FABRICS

Fabric



Linocut

Linocut

Designer:
Kathy Dotterer

Product Dimensions:
Repeat is horizontal
13.75" x 14" vertical

Weight:
348 g/m

Product Description: Linocut is made of 100% polypropylene with a weight of 348 g/m. It is a jacquard double weave construction. (84 ends x 60 picks) The design was inspired by linocuts hence the name. It has a relaxed fun vibe adding personality to your outdoor space.

Operational/Functional Aspects: This is a Revolution Outdoor Fabric which has 3000 hours of UV protection along with a five-year warranty. The yarn has been engineered to perform in outdoor environments while maintaining a soft, dry hand.

Colors of Finishes Available:
16 colorways

STI/REVOLUTION FABRICS

Fabric



Shapeshifter

Shapeshifter

Product Description: Pattern Shapeshifter is made of 99% polypropylene, 1% polyester with a weight of 608 g/m. It is a jacquard double weave construction using recently developed outdoor chunky boucle yarn. (84 ends x 38 picks) Inspired by modern geometric designs, this chunky boucle brings a very hip and modern look to the outdoor market.

Operational/Functional Aspects: Shapeshifter is a Revolution Outdoor Fabric that has 3000 hours of UV protection and a five-year warranty. The yarns used have been tested to withstand elements of outdoor environments while also maintaining a soft, dry hand.

Colors of Finishes Available:
16 colorways

Designer:
Hayley Ludwigsen

Product Dimensions:
Repeat is horizontal
13.75" x 14" vertical

Weight:
608 g/m

TEMPOTEST USA

Fabric



Newport-Clay



Product Description: Newport is a nautical-inspired stripe that is featured in a modern color that is inspired by the warmth of fired clay. A durable canvas construction, this outdoor performance fabric is made in Italy from 100% solution-dyed acrylic fiber and is part of our first PFAS- free collection. This fabric design meets Oeko-Tex Standard100, CAL 117, NFPA260, UFAC 1990 standards and is backed by a six-year warranty.

Operational/Functional Aspects:

Colors of Finishes Available:

Newport-Clay

Designer:
D-2

Product Dimensions:
54" wide

Weight: 8 oz./square yard